

FRAME/WORK

Creating a dynamic guide for Tuscaloosa

2018 Comprehensive Plan & City Code Update
Lakes Subcommittee Meeting 1

November 2, 2018

Welcome

Brendan Moore, AICP

Executive Director
Office of Urban Development

Ashley Crites, AICP

Director of Planning
Office of Urban Development

FRAME/WORK

Creating a dynamic guide for Tuscaloosa

Agenda

1. Welcome
2. Process Overview
3. Group Discussion
 1. *Lakes 101*
 2. *Private property considerations*
 3. *City side of the Acquisition Line*
 4. *Recreation and tourism*
4. Next Steps
5. Public Comment
6. Adjourn





Process Overview

FRAME/WORK

Creating a dynamic guide for Tuscaloosa

Job Description: Lakes

Lakes: Tuscaloosa, Harris, and Nicol

1. Private property:
 - *Lakefront development*
 - *Water quality, sedimentation and watershed dynamics*
 - *Infrastructure*
2. City property (on acquisition line): Docks, piers, boat houses, etc.
3. Recreation:
 - *Tourism*
 - *Activities*
 - *Nuisances*

Homework: Lakes Outside of Steering Committee Meetings

1. What are the opportunities and challenges associated with recreation and tourism on Lake Tuscaloosa, Lake Nicol, and Lake Harris?
2. Lake Tuscaloosa serves as both a water resource and provides residential opportunities for the City – how do we balance both needs?
3. How do we manage the needs for boats, docks, piers, etc. on Lake Tuscaloosa so that those developments do not impact the quality of the lake but also allow residents to fully enjoy their properties?
4. Developments adjacent to Lake Tuscaloosa traverse both the public and private realms – how do we simplify the process to eliminate confusion?

Group Discussion

FRAME/WORK

Creating a dynamic guide for Tuscaloosa

Group Discussion

Lakes 101

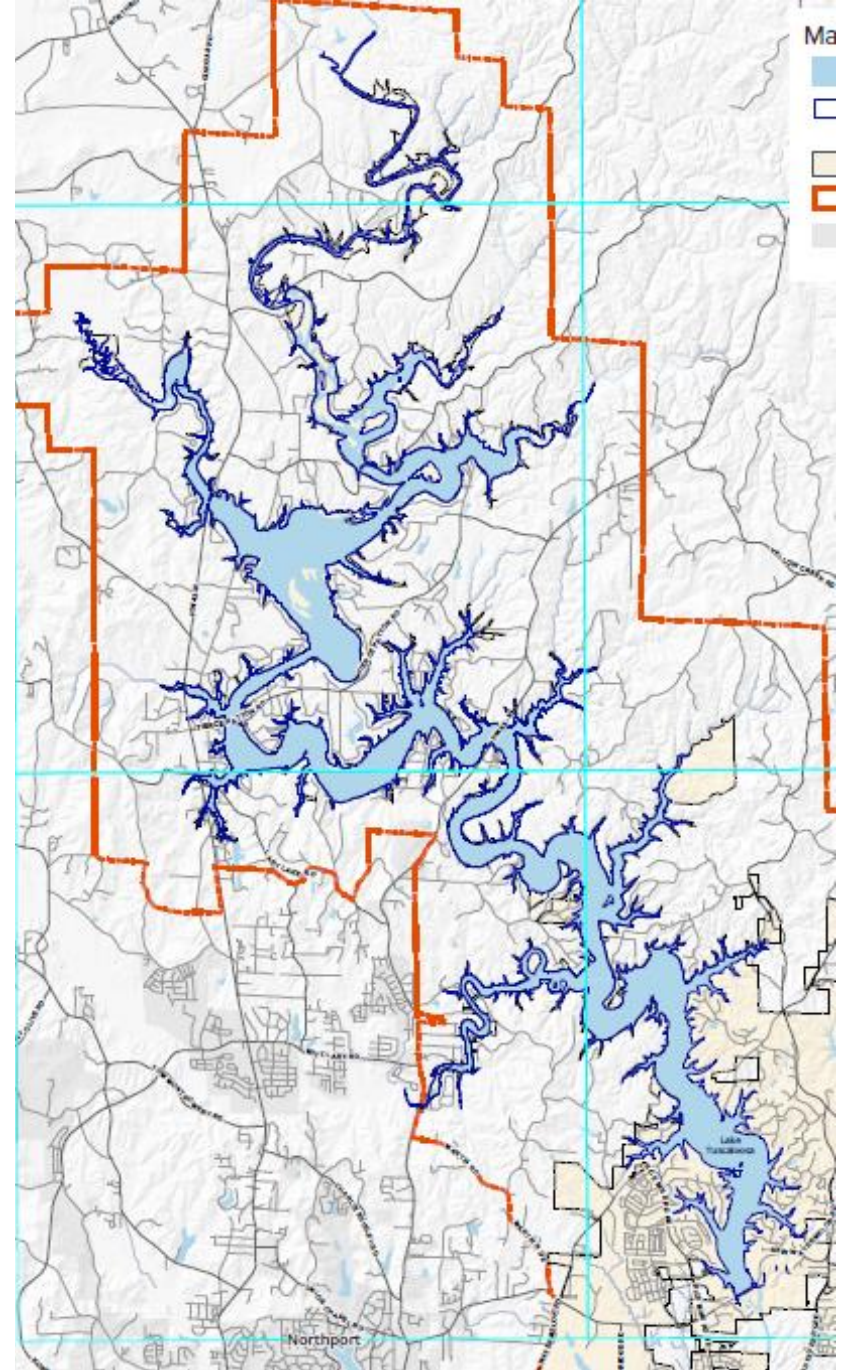


Lakes 101 Components

- 1. Context and History**
- 2. Land Use and Physical Conditions**
- 3. Existing Policy Overview**

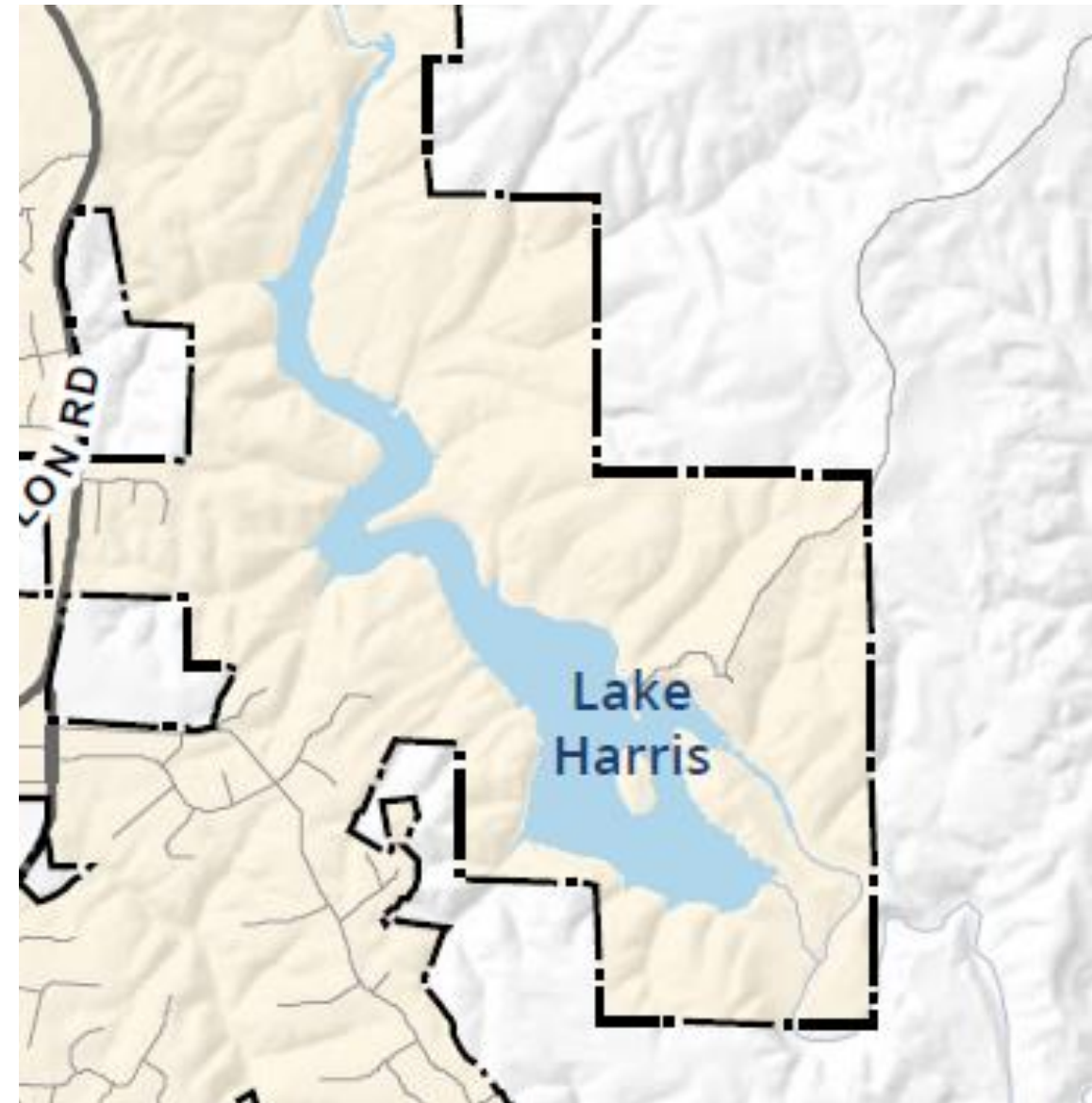
Lake Tuscaloosa

- Construction completed in 1970
- Spillway elevation of 223.2 feet
- 5,885 acres
- 177 miles of shoreline
- Contains approximately 40 billion gallons of water
- Could provide up to 200 million gallons per day of drinking water
- 3 Public Landings and Docks
- More than 1,200 Private Docks



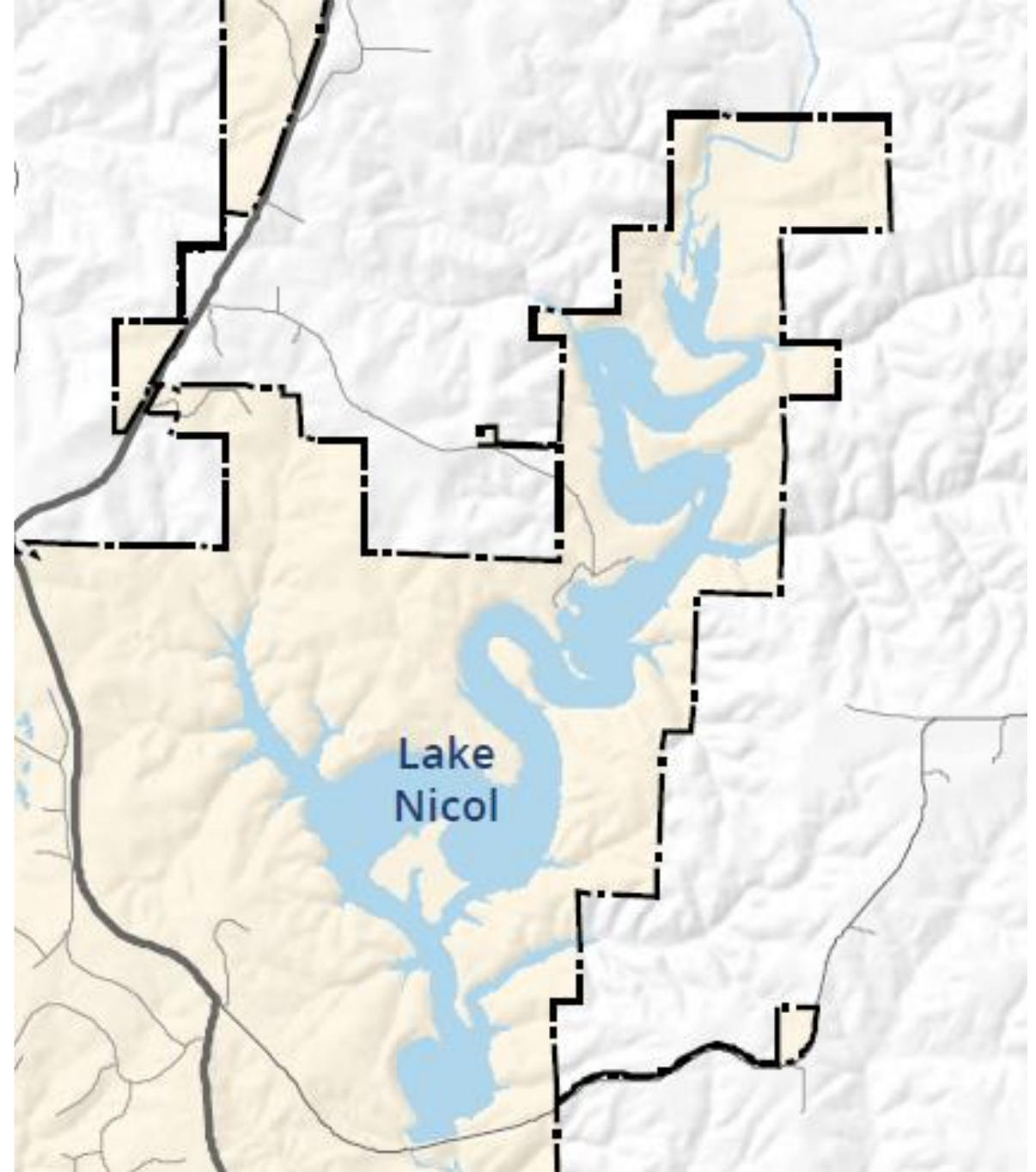
Harris Lake

- Construction completed in 1929
- Spillway elevation of 205 feet
- 220 acres
- Holds approximately 1 billion gallons of water
- Consists of two arch dams that were first true arch type dams constructed in Alabama
- 576 acres of protected land



Lake Nicol

- Completed in 1936
- Serves as backup for Lake Tuscaloosa
- 384 acres
- Holds approx. 3.3 billion gallons of water
- 709 acres of protected land



A group of people are gathered around a table, looking at architectural plans and discussing them. The scene is dimly lit, with a dark overlay. The people are wearing name tags and are engaged in conversation. The text "Group Discussion" is overlaid in white, and "Private property considerations" is overlaid in yellow below it.

Group Discussion

Private property considerations

LAKE TUSCALOOSA

Property Ownership



Private property considerations

1. Desired Outcomes
2. Critical information needed

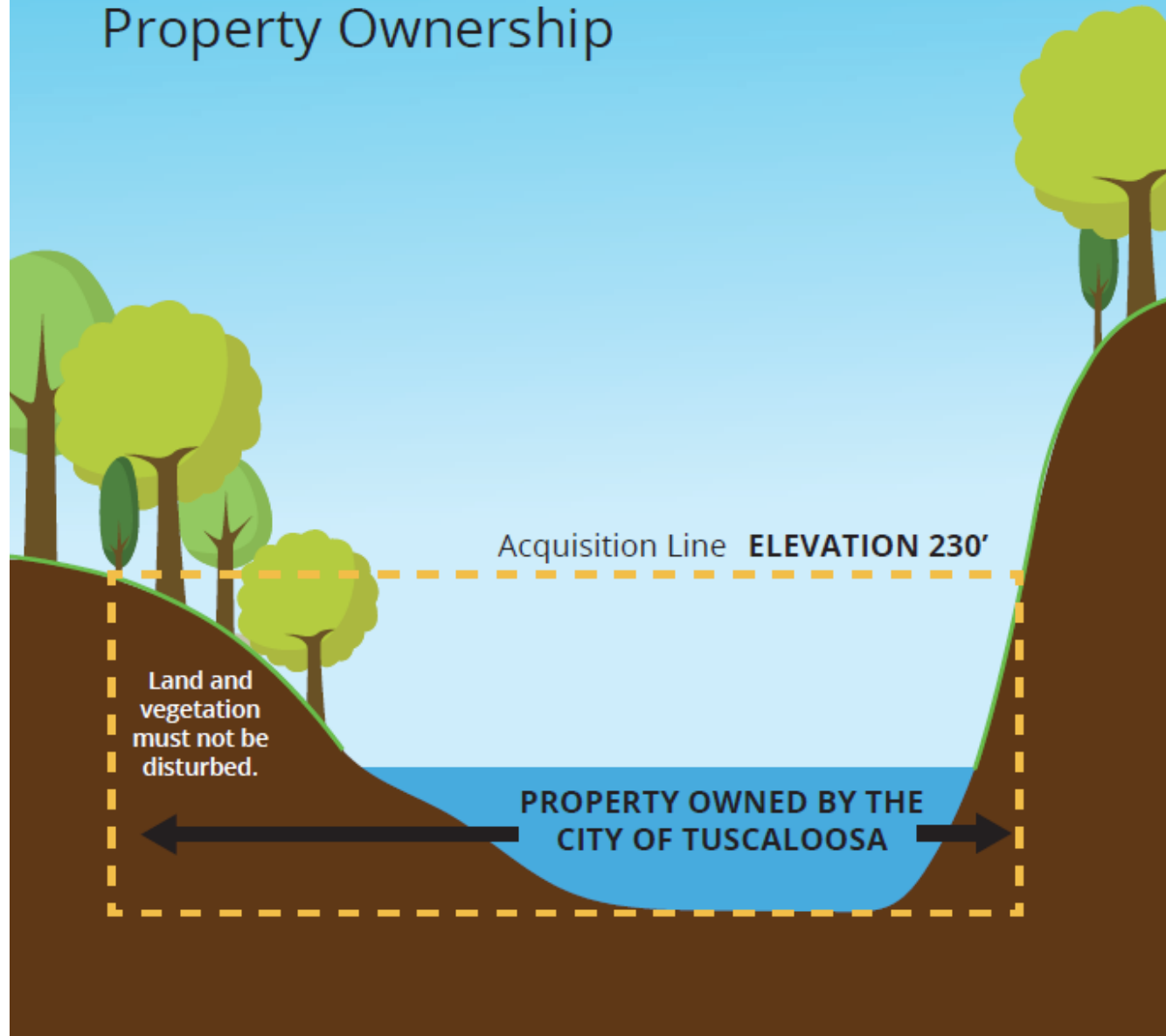


Group Discussion

City side of the Acquisition Line

LAKE TUSCALOOSA

Property Ownership



City side of the Acquisition Line

1. Desired outcomes
2. Critical information needed

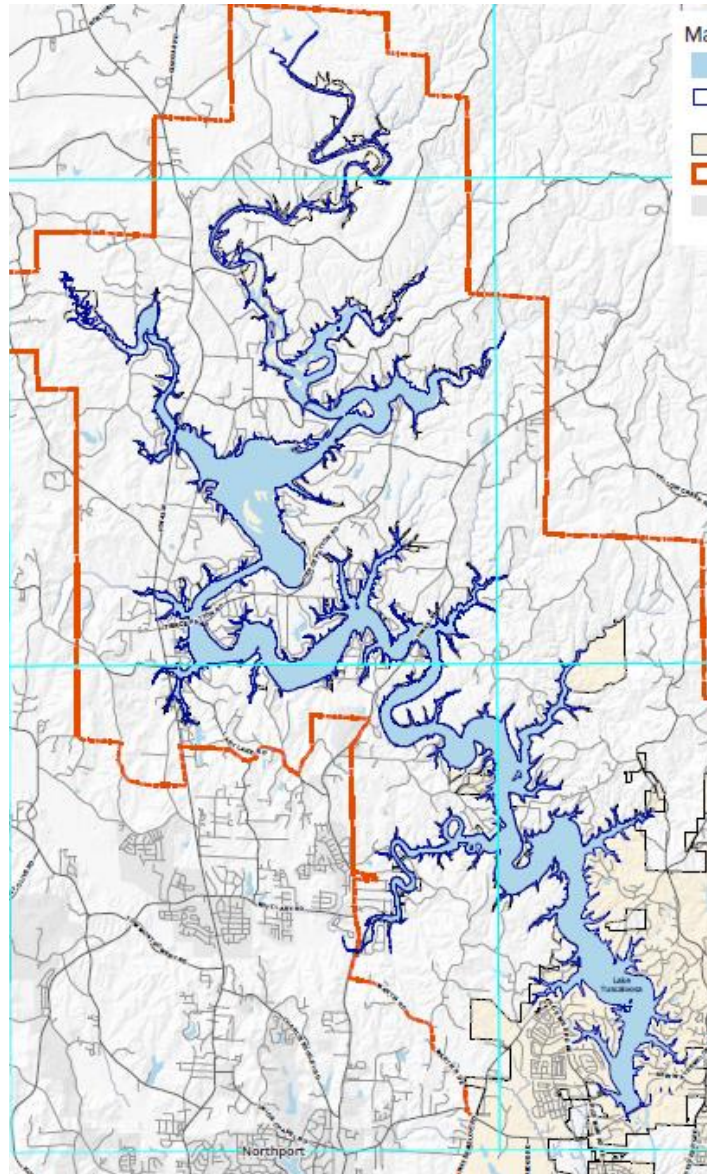
Group Discussion

Recreation and tourism opportunities and challenges

Recreation and Tourism

1. Desired outcomes
2. Critical information needed

Lake Tuscaloosa



Activities (C.18, A.IV)

Prohibited



Camping



Glass

Conditional



Motorized
Boats



Personal
Watercraft



Water-Skiing



Open Fire

Permitted



Fishing



Swimming

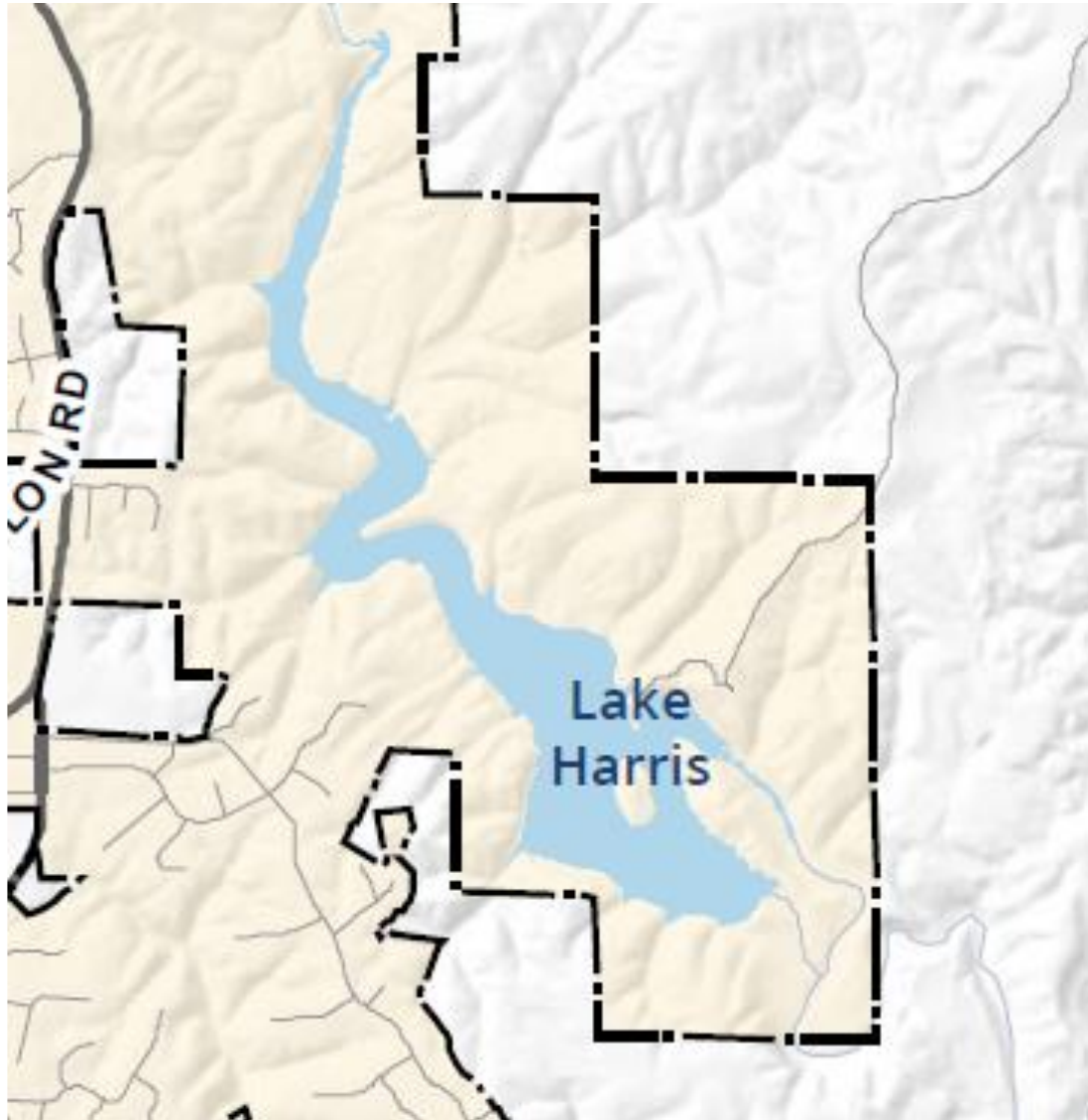


Hiking



Bird Watching

Harris Lake



Activities (C.18, A.IV)

Prohibited

Conditional

Permitted



Camping



Open Fire



Fishing



Motorized
Boats



Swimming



Hiking



Personal
Watercraft



Bird Watching

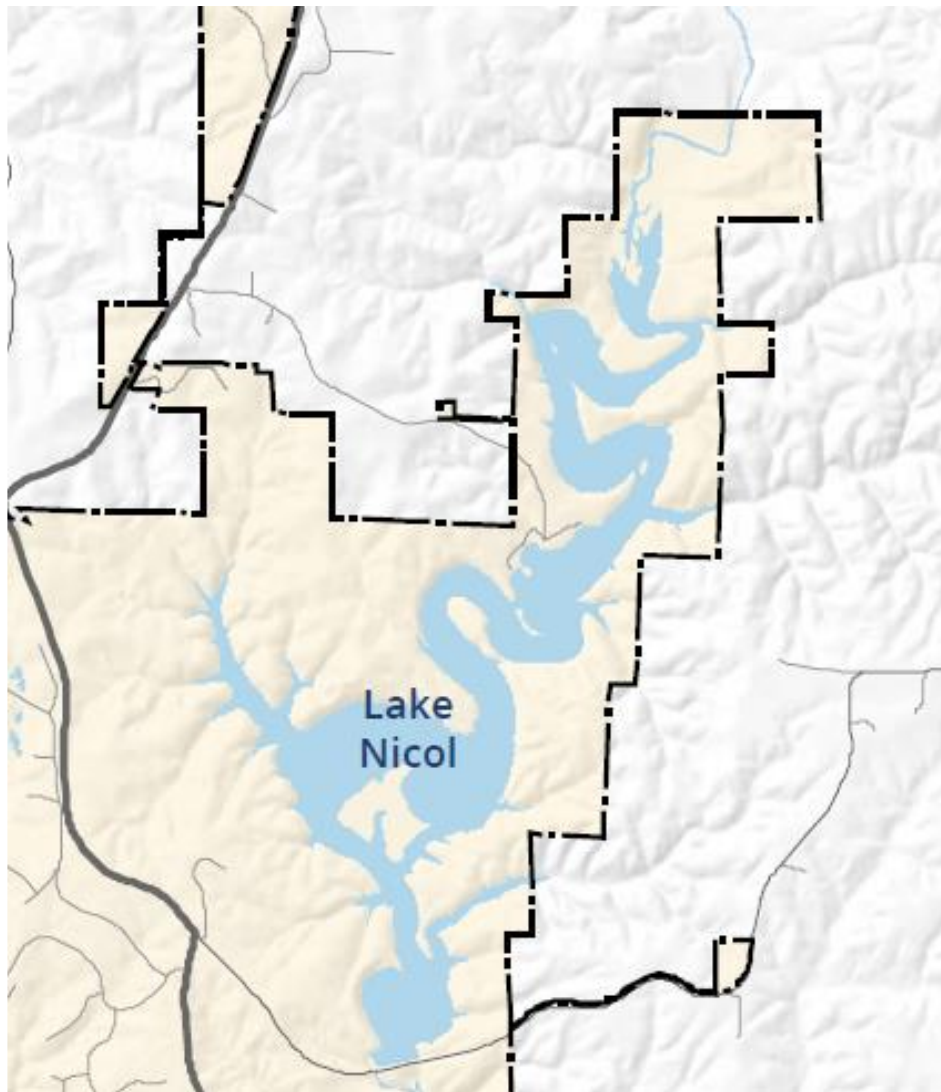


Water-Skiing



Glass

Lake Nicol



Activities (C.18, A.IV)

Prohibited



Camping



Personal
Watercraft



Water-Skiing



Glass

Conditional



Motorized
Boats



Swimming



Open Fire

Permitted



Fishing



Hiking



Bird Watching

Next Steps

FRAME/WORK

Creating a dynamic guide for Tuscaloosa

Public Comment

FRAME/WORK

Creating a dynamic guide for Tuscaloosa



Thank you

FRAME/WORK

Creating a dynamic guide for Tuscaloosa

Subcommittees

FRAME/WORK

Creating a dynamic guide for Tuscaloosa